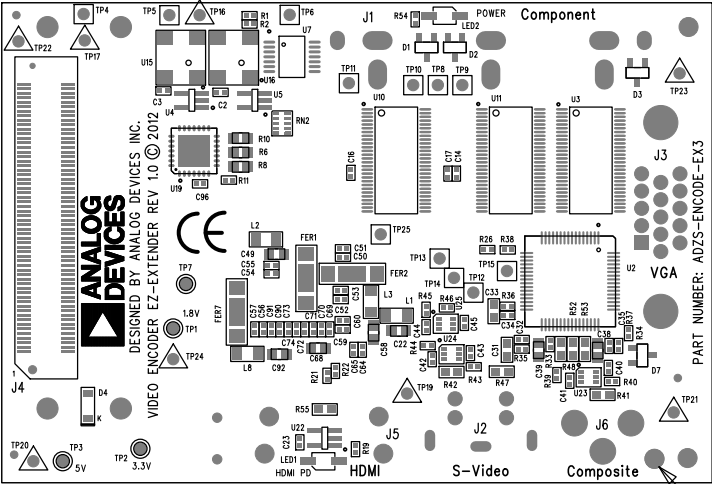



| REVISIONS | | | | |
|-----------|-----------------------|---------------------|----------|----------|
| REV | DESCRIPTION OF CHANGE | DRFTR | DATE | APPROVED |
| 0.1 | NEW RELEASE | EASTERN CIRCUITS | 10/12/11 | |
| 1.0 | EC02012-012 | EASTERN CIRCUITS | 03-14-12 | |



BAD MARK FIDUCAL

| REFERENCE DESIGNATIONS | |
|------------------------|---------------------------|
| LAST USED | NOT USED |
| C96 | C5,6,13,27,28,78,79,88,89 |
| D11 | |
| F1 | |
| FER8 | |
| J6 | |
| L9 | |
| LED2 | |
| P1 | |
| R58 | |
| RN2 | |
| TP25 | TP18 |
| U25 | U20,21 |
| VR2 | |

- NOTES:
1. MASK PADS FOR TP'S BEFORE SOLDERING.
 2. BREAK OFF STRIPS AT COMPLETION OF ASSEMBLY.

| | | | | |
|--|------------------------|----------|--|--------------------------|
| UNLESS OTHERWISE SPECIFIED DIMENSIONS ARE IN INCHES TOLERANCES ARE : .XX +/- .010 .XXX +/- .005 | CONTRACT NO. | |  20 Cotton Road Nashua, New Hampshire 03063 (603) 883-2430 FAX (603) 882-2655 | |
| | APPROVALS | DATE | | |
| | DRAWN EASTERN CIRCUITS | 03-14-12 | ASSEMBLY DRAWING TOP SIDE VIDEO ENCODER EZ-EXTENDER BOARD | |
| | CHECKED | | | |
| MATERIAL | ENGINEERING | | SIZE B | DWG. NO. ASSMAA0252-2010 |
| FINISH | QUALITY | | | |
| DO NOT SCALE THIS DRAWING | MANUFACTURING | | SCALE 1 : 1 | SHEET 1 OF 2 |