
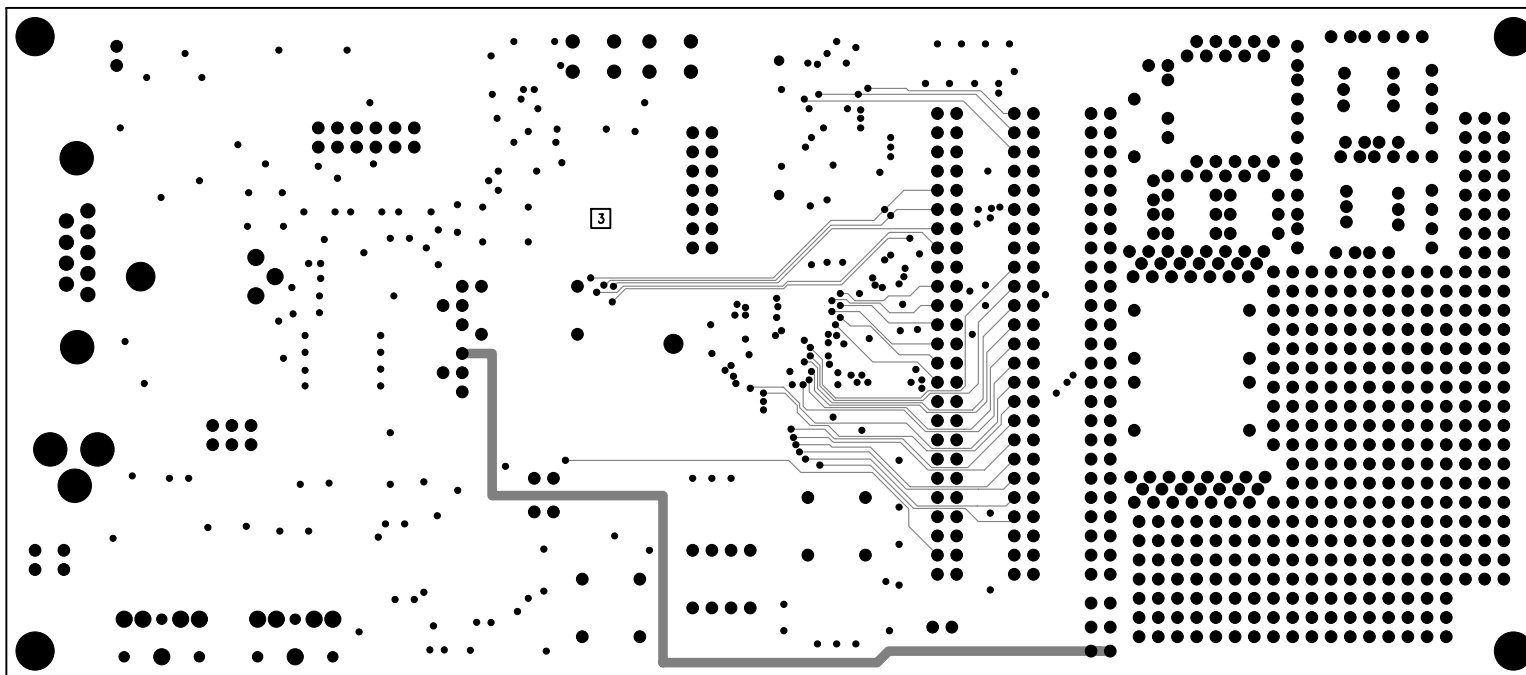

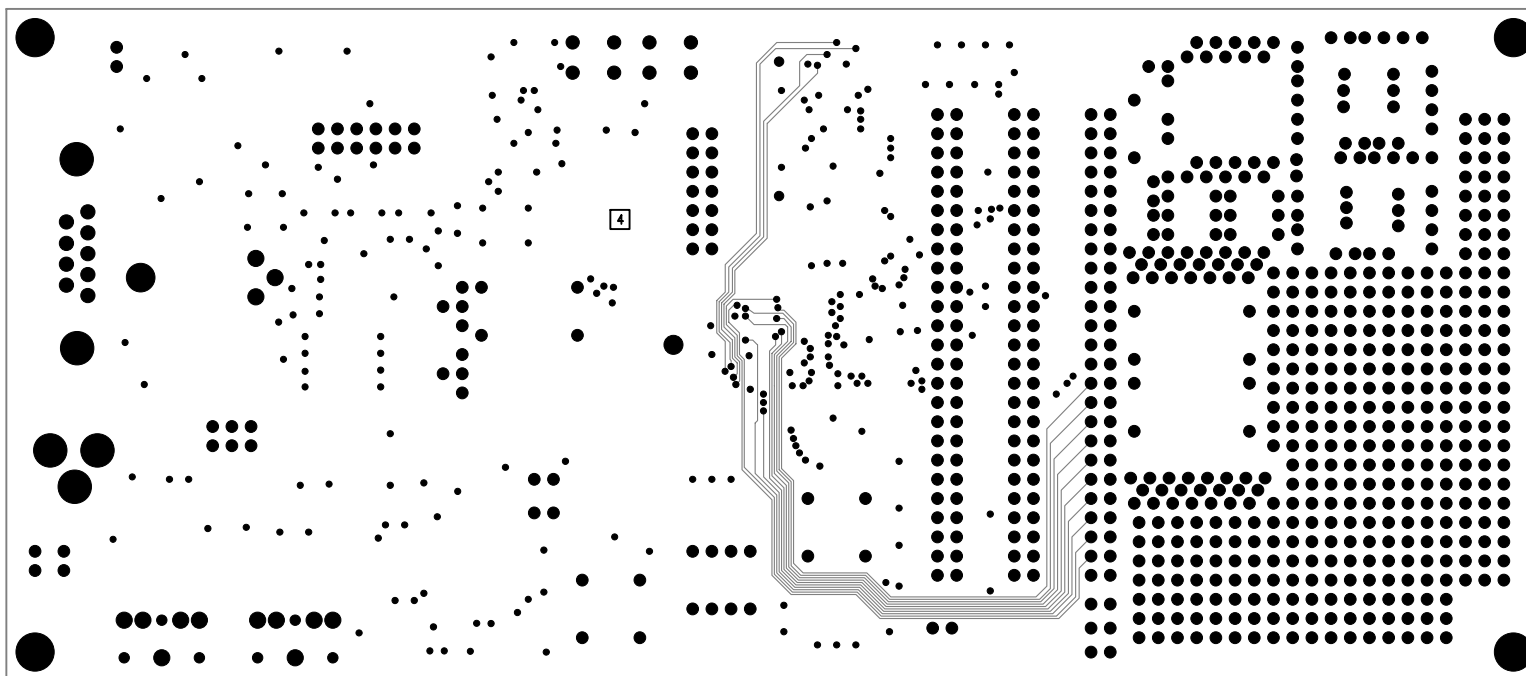



UNLESS OTHERWISE SPECIFIED DIMENSIONS ARE IN INCHES TOLERANCES ARE : .XX +/- .010 .XXX +/- .005	CONTRACT NO.		<div> ANALOG DEVICES</div> <div>20 Cotton Road Nashua, New Hampshire 03063 (603) 883-2430 FAX (603) 882-2655</div>			
	APPROVALS	DATE				
MATERIAL	DRAWN EASTERN CIRCUITS	04/26/06	LAYER 2 GROUND PLANE ADSP2189 EZ-KIT LITE			
	CHECKED					
FINISH	ENGINEERING		SIZE B	DWG. NO. A0153-99	REV. 2.0	
	QUALITY					
DO NOT SCALE THIS DRAWING	MANUFACTURING		SCALE 1 : 1	SHEET 2 OF 10		



UNLESS OTHERWISE SPECIFIED DIMENSIONS ARE IN INCHES TOLERANCES ARE : .XX +/- .010 .XXX +/- .005	CONTRACT NO.		 ANALOG DEVICES	20 Cotton Road Nashua, New Hampshire 03063 (603) 883-2430 FAX (603) 882-2655	
	APPROVALS	DATE			
MATERIAL	DRAWN	EASTERN CIRCUITS	04/26/06	LAYER 3 INTERNAL SIGNAL ADSP2189 EZ-KIT LITE	
	CHECKED				
FINISH	ENGINEERING			SIZE B	DWG. NO. A0153-99
	QUALITY				
DO NOT SCALE THIS DRAWING	MANUFACTURING			SCALE 1 : 1	SHEET 3 OF 10
				REV.	2.0



UNLESS OTHERWISE SPECIFIED DIMENSIONS ARE IN INCHES TOLERANCES ARE : .XX +/- .010 .XXX +/- .005	CONTRACT NO.		 ANALOG DEVICES	20 Cotton Road Nashua, New Hampshire 03063 (603) 883-2430 FAX (603) 882-2655	
	APPROVALS	DATE			
MATERIAL	DRAWN	EASTERN CIRCUITS	04/26/06	LAYER 4 INTERNAL SIGNAL ADSP2189 EZ-KIT LITE	
	CHECKED				
FINISH	ENGINEERING			SIZE B	DWG. NO. A0153-99
	QUALITY				
DO NOT SCALE THIS DRAWING	MANUFACTURING			SCALE 1 : 1	SHEET 4 OF 10



**ANALOG
DEVICES**

20 Cotton Road
Nashua, New Hampshire 03063
(603) 883-2430 FAX (603) 882-2655

LAYER 4 INTERNAL SIGNAL
ADSP2189 EZ-KIT LITE

SIZE
B

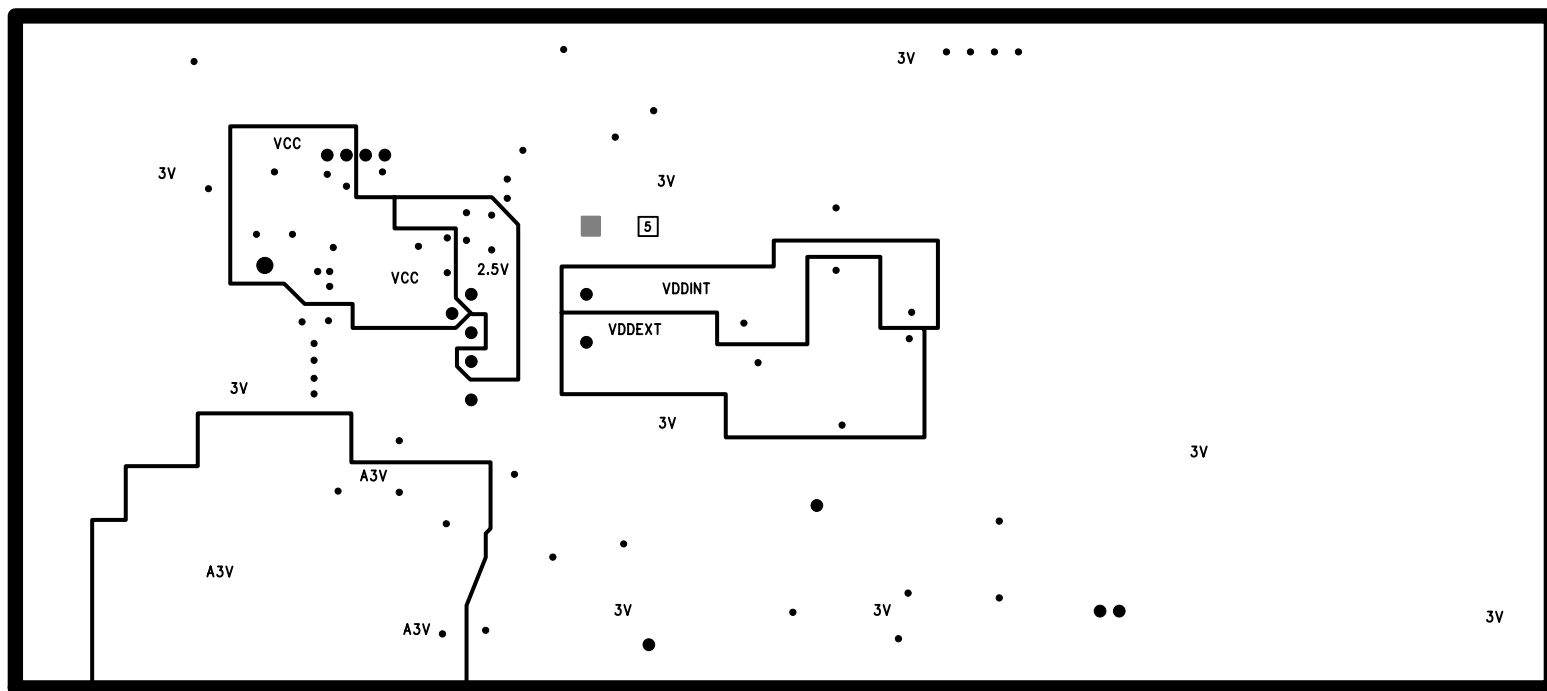
DWG. NO.


A0153-99

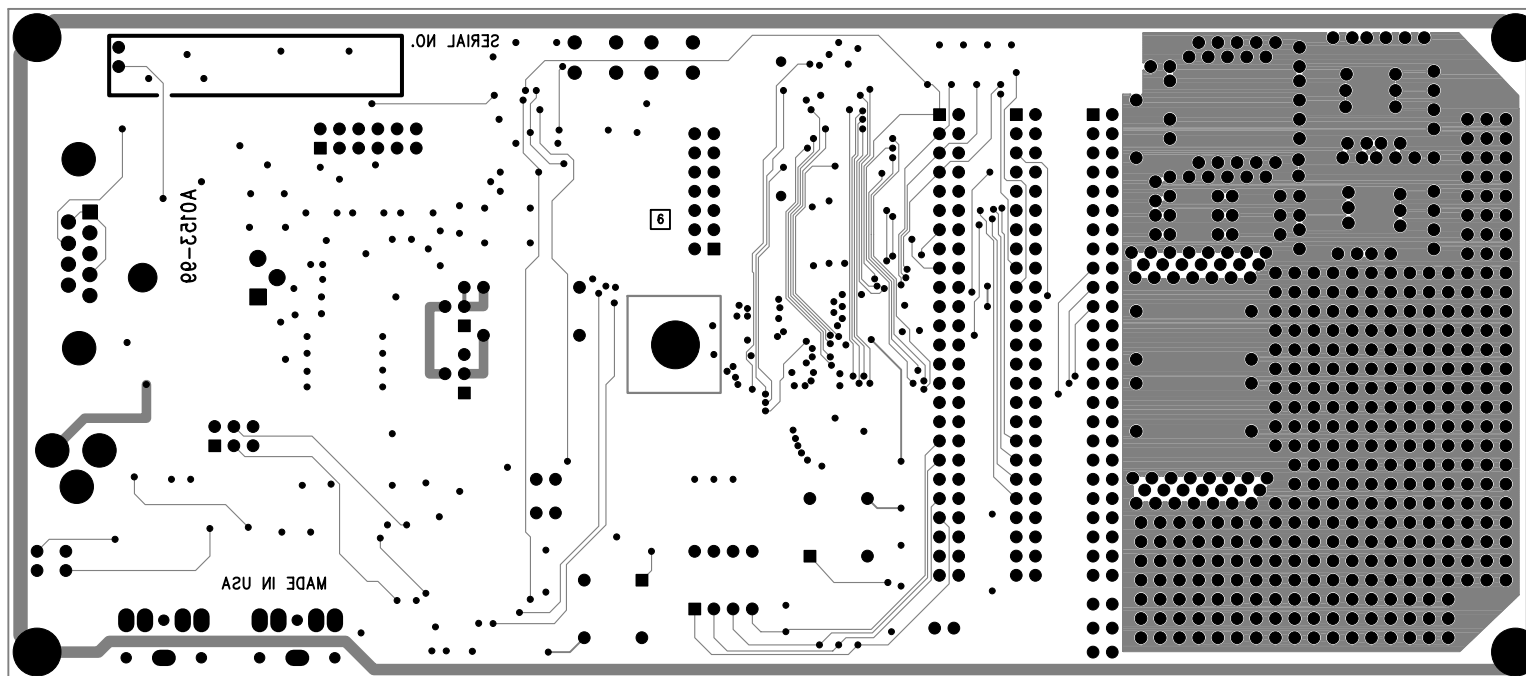
REV.
2.0


SCALE 1 : 1

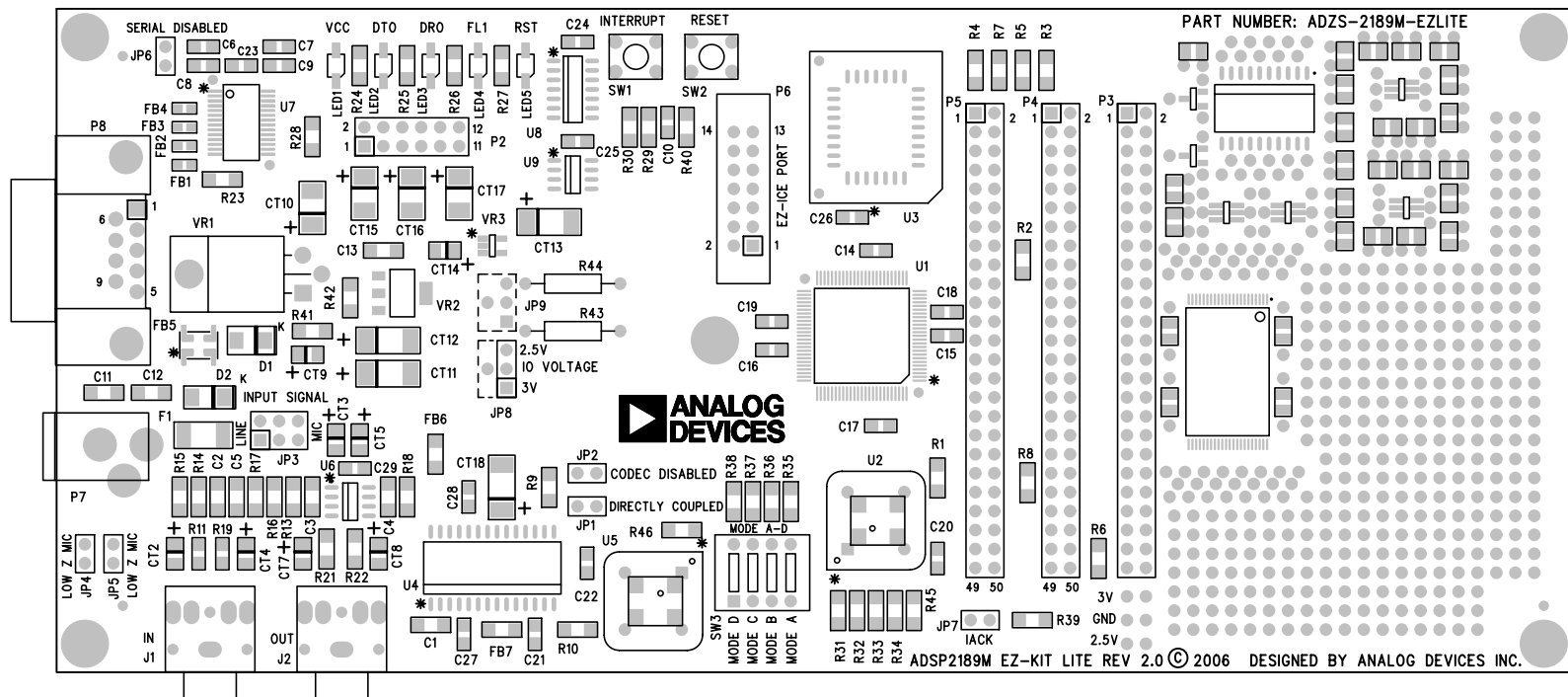
SHEET 4 OF 10




UNLESS OTHERWISE SPECIFIED DIMENSIONS ARE IN INCHES TOLERANCES ARE : .XX +/- .010 .XXX +/- .005	CONTRACT NO.		 20 Cotton Road Nashua, New Hampshire 03063 (603) 883-2430 FAX (603) 882-2655	
	APPROVALS	DATE		
	DRAWN EASTERN CIRCUITS	04/26/06	LAYER 5 POWER PLANE ADSP2189 EZ-KIT LITE	
	CHECKED			
FINISH	ENGINEERING		SIZE B	REV. 2.0
	QUALITY		DWG. NO.	
DO NOT SCALE THIS DRAWING	MANUFACTURING		SCALE 1 : 1	SHEET 5 OF 10
			A0153-99	

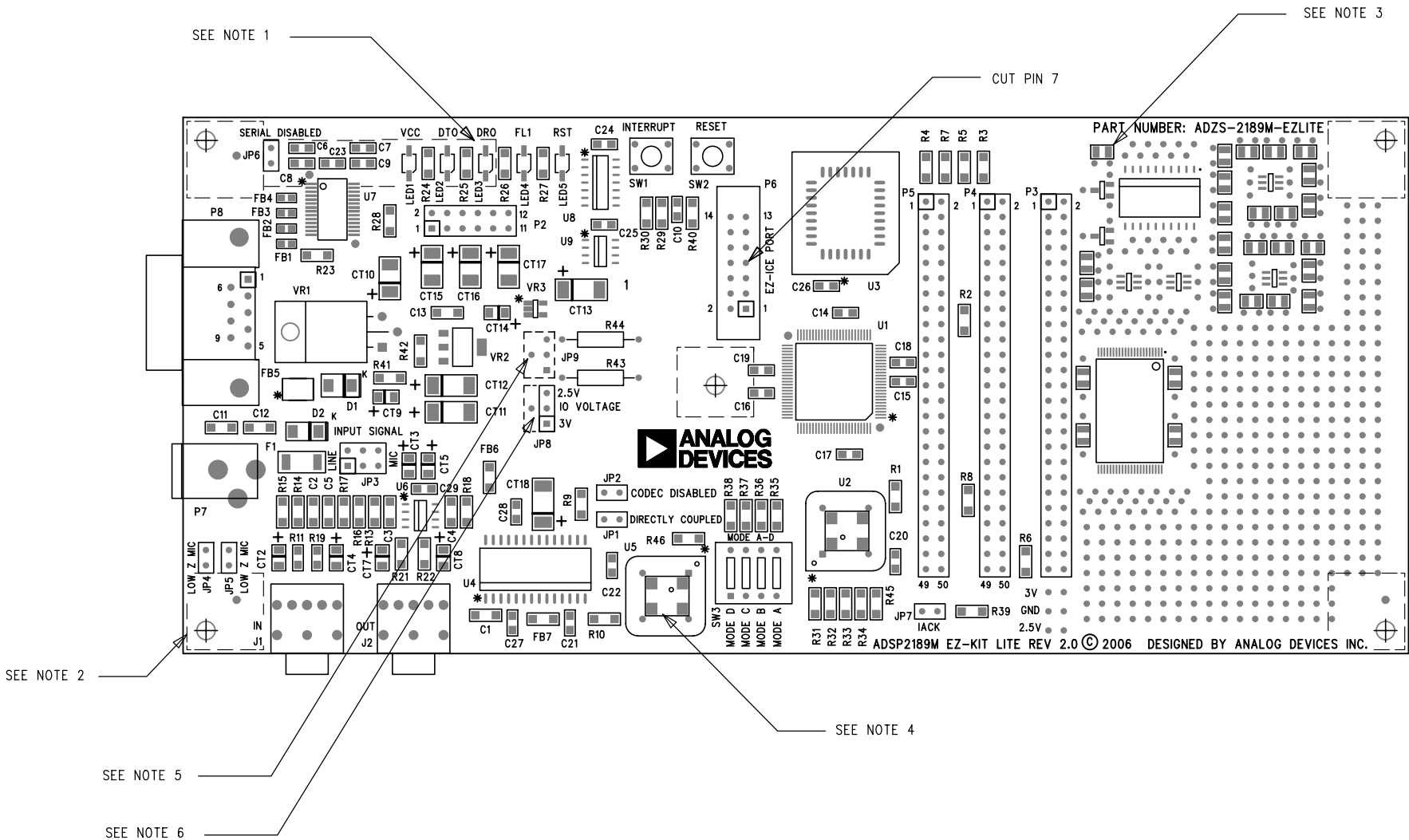


UNLESS OTHERWISE SPECIFIED DIMENSIONS ARE IN INCHES TOLERANCES ARE : .XX +/- .010 .XXX +/- .005	CONTRACT NO.		 ANALOG DEVICES		20 Cotton Road Nashua, New Hampshire 03063 (603) 883-2430 FAX (603) 882-2655			
	APPROVALS	DATE						
	MATERIAL	DRAWN EASTERN CIRCUITS	04/26/06	LAYER 6 BOTTOM SIDE ADSP2189 EZ-KIT LITE				
		CHECKED						
FINISH	ENGINEERING		SIZE B	DWG. NO.	A0153-99	REV. 2.		
	QUALITY							
DO NOT SCALE THIS DRAWING	MANUFACTURING		SCALE	1 : 1		SHEET 6 OF 10		



UNLESS OTHERWISE SPECIFIED DIMENSIONS ARE IN INCHES TOLERANCES ARE : .XX +/- .010 .XXX +/- .005	CONTRACT NO.		 20 Cotton Road Nashua, New Hampshire 03063 (603) 883-2430 FAX (603) 882-2655	
	APPROVALS	DATE		
	DRAWN EASTERN CIRCUITS	04/26/06	SILKSCREEN TOP SIDE ADSP2189 EZ-KIT LITE	
	CHECKED			
FINISH	ENGINEERING		SIZE B	REV. 2.0
DO NOT SCALE THIS DRAWING	QUALITY		DWG. NO.	A0153-99
	MANUFACTURING		SCALE 1 : 1	SHEET 9 OF 10

REVISIONS				
REV	DESCRIPTION OF CHANGE	DRFTR	DATE	APPROVED
1.0	NEW RELEASE	EASTERN CIRCUITS	09/30/99	
1.1	REFER TO EC099-049	EASTERN CIRCUITS	11/16/99	
2.0	REFER TO EC02006-054	EASTERN CIRCUITS	04/26/06	



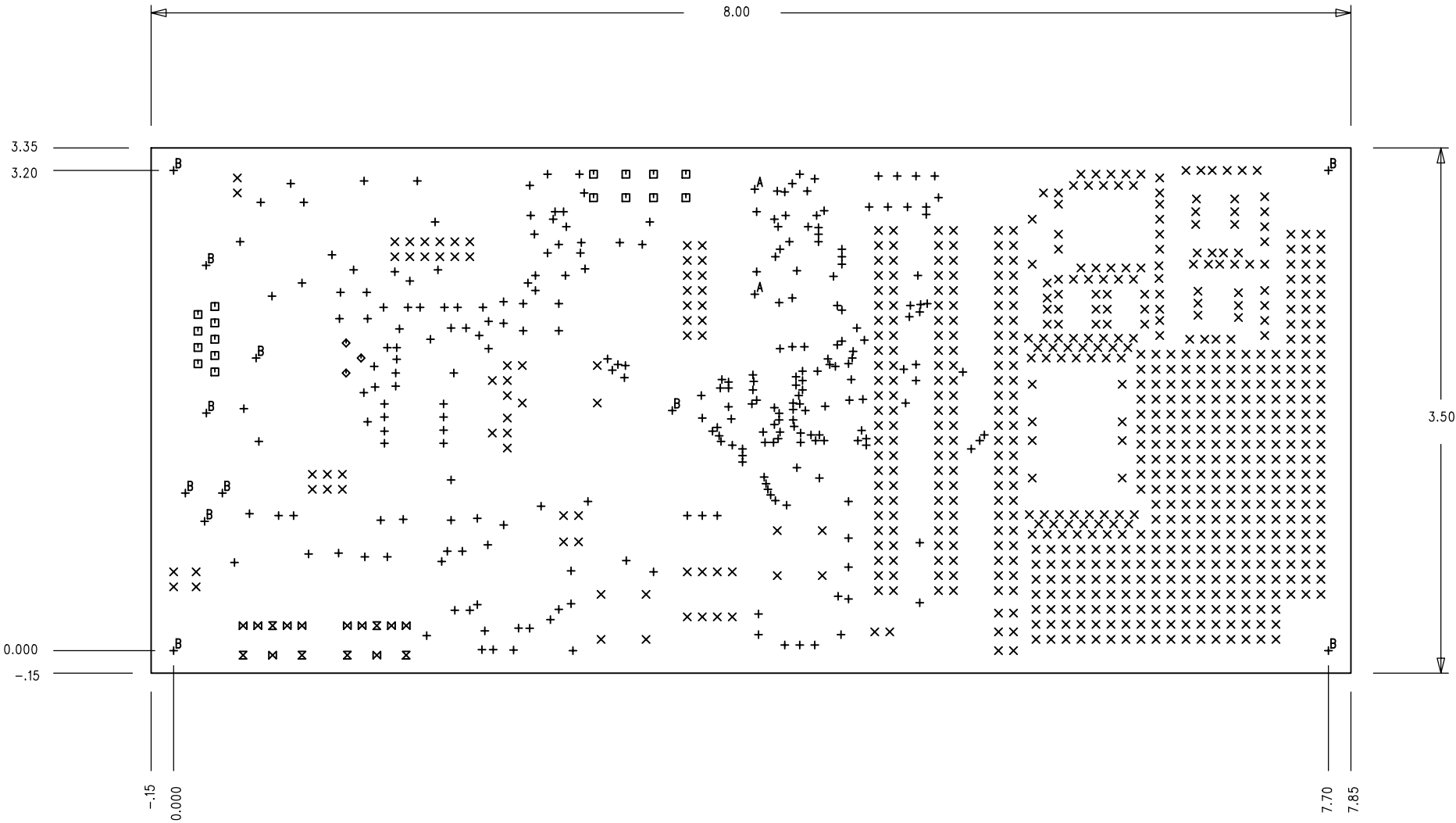
REFERENCE DESIGNATIONS	
LAST USED	NOT USED
C29	
CT18	CT1,CT6
D2	
F1	
FB7	
J2	
JP9	
LED5	
P8	P1
R46	R12,R20
SW3	
U9	
VR3	

NOTES:

1. PLACE SERIAL NUMBER ON BOTTOM SIDE.
2. PLACE 5 RUBBER FEET ON BOTTOM SIDE.
3. ALL PARTS WITHOUT REFERENCE DESIGNATIONS MAY BE ADDED LATER BY THE INDIVIDUAL CUSTOMER.
4. U2 & U5 HAVE OPTIONAL MOUNTING FOR EITHER SMT OR THROUGH HOLE. USE PARTS SUPPLIED ON BOM.
5. DO NOT INSTALL JP9 & P1-P5.
6. INSTALL 3 PIN CONNECTOR FOR JP8


UNLESS OTHERWISE SPECIFIED DIMENSIONS ARE IN INCHES TOLERANCES ARE : .XX +/- .010 .XXX +/- .005	CONTRACT NO.		<div><div></div><div>ANALOG DEVICES</div></div> <div>20 Cotton Road Nashua, New Hampshire 03063 (603) 883-2430 FAX (603) 882-2655</div>	
	APPROVALS	DATE		
MATERIAL	DRAWN EASTERN CIRCUITS	04/26/06	ASSEMBLY DRAWING TOP SIDE ADSP2189 EZ-KIT LITE	
FINISH	CHECKED			
DO NOT SCALE THIS DRAWING	ENGINEERING		SIZE D	REV. 2.0
	QUALITY		DWG. NO.	ASSMAA0153-99
	MANUFACTURING		SCALE 2 : 1	SHEET 1 OF 1

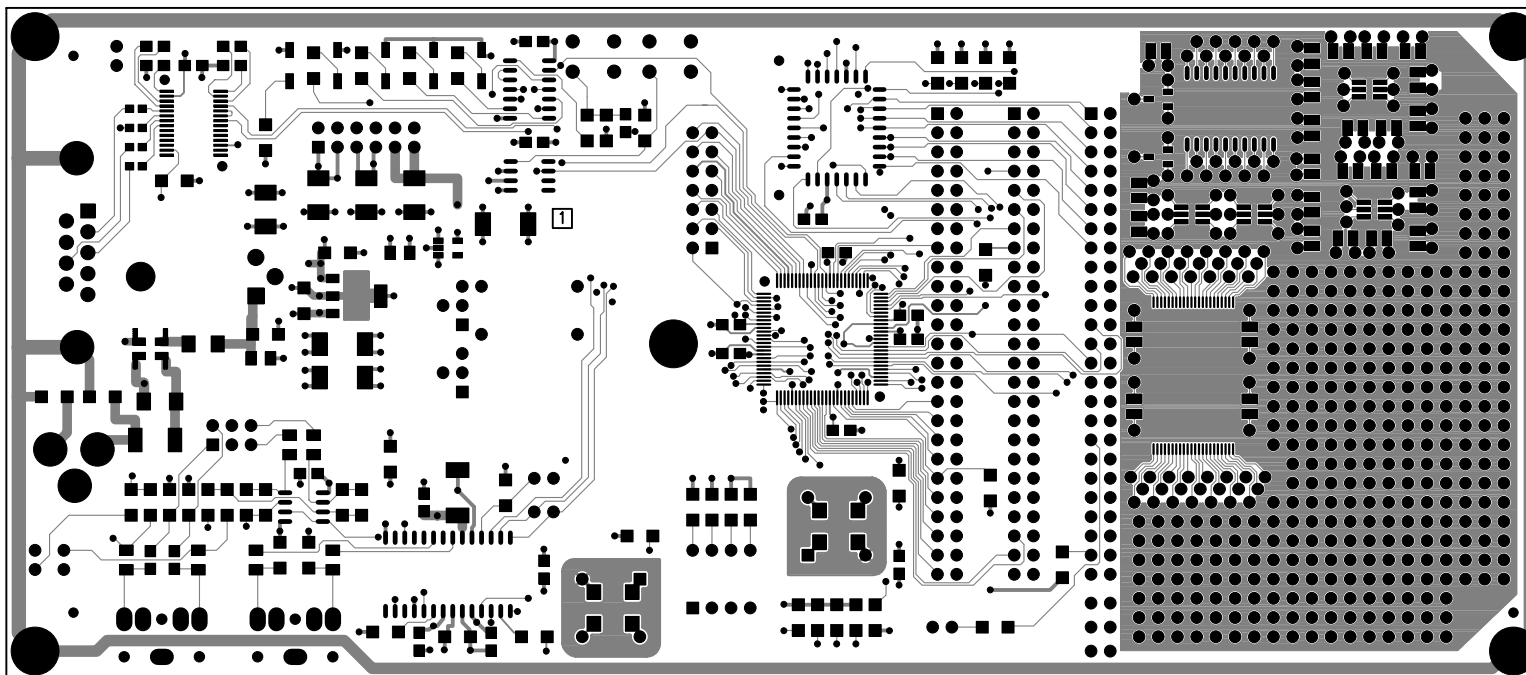
REVISIONS				
REV	DESCRIPTION OF CHANGE	DRFTR	DATE	APPROVED
1.0	NEW RELEASE	EASTERN CIRCUITS	09/30/99	
1.1	REFER TO ECO99-049	EASTERN CIRCUITS	11/16/99	
2.0	REFER TO ECO2006-054	EASTERN CIRCUITS	04/26/06	




- UNLESS OTHERWISE SPECIFIED
- BOARD TO BE FABRICATED PER IPC-6012A, CLASS 2.
 - MATERIAL: POLYCLAD FR-370HR OR EQUIVALENT. OUTER LAYERS 1/2 OZ/SQFT CU. INNER LAYERS 1 OZ/SQFT CU FINISHED .062 (.055 MIN .070 MAX SEE DETAIL). VENDOR MAY ADJUST THICKNESS TO FULFILL NOTE 9.
 - PLATING: ADDITIONAL CU PLATING 1 OZ/SQFT. ALL HOLES PLATED THROUGH, EXCEPT AS NOTED IN HOLE LEGEND. MINIMUM PTH BARREL THICKNESS = 0.0008" MINIMUM AVERAGE PER IPC-6012A WITH AMENDMENT 1, CLASS 2 REQUIREMENTS. WITH NO SINGLE MEASUREMENT LESS THAN 0.00071 IN THE PLATED HOLES.
 - FINISH: SURFACES TO BE COATED BY ENIG OF 2 TO 10 MICROINCHES OVER A MINIMUM OF 60-200 MICROINCHES OF LOW STRESS NICKEL.
 - SOLDERMASK: SOLDER MASK TO BE TRANSPARENT GREEN LPI BOTH SIDES PER GERBER FILES.
 - SILKSCREEN: WHITE EPOXY INK, APPLY TO TOP SIDE PER GERBER FILE.
 - ARTWORK: MINIMUM FEATURE SIZE = 0.006
MINIMUM AIR GAP = 0.006
 - ALL DIMENSIONS ARE IN INCHES.
 - CONTROLLED IMPEDANCE: BOARD TO BE BUILT TO YIELD CONTROLLED IMPEDANCE OF 50 OHMS - 70 OHMS ON ALL .006" LINE WIDTHS
 - DO NOT ADD NON-FUNCTIONAL COPPER THIEVING ON OPEN AREAS OF OUTER LAYERS. THIEVING IS ALLOWED ON INNER LAYERS, UNLESS OTHERWISE SPECIFIED.
 - VIAS SHOULD BE COVERED ACCORDING TO ONE OF THE FOLLOWING METHODS.
METHOD 1 IS PREFERRED.
METHOD 1: VIAS MUST BE FILLED WITH SOLDERMASK MATERIAL AFTER ELECTROLESS NICKEL/IMMERSION GOLD AND BEFORE PRIMARY LPI MASK. AFTER THE FILL IS CURED, THE PRIMARY MASK IS THEN APPLIED WITH NO VIA APERTURES BOTH SIDES.
METHOD 2: AFTER APPLICATION OF FULL BODY ELECTROLESS NICKEL/IMMERSION GOLD, APPLY PRIMARY MASK WITH REDUCED VIA APERTURES THAT ARE 6 MILS LARGER THAN DRILLED HOLE DIAMETER BOTH SIDES. THEN APPLY SOLDER MASK PLUG ON COMPONENT SIDE.
 - VIA HOLES (.016) REQUIRE TANGENCY ONLY, INSTEAD OF ANNULAR RING.
 - TEARDROP PADS ARE ACCEPTABLE WHERE NEEDED.
 - REMOVAL OF NON-FUNCTIONAL PADS ON LAYERS 4 AND 5 IS ACCEPTABLE.
 - USE IPC-D-356A NETLIST AS SUPPLIED FOR CHECKING.
 - BUILD AS 1-UP PCB.

HOLE SIZE CHART				
SYMBOL	DIAMETER		QTY	PLATE
+	.016	+ .003/- .016	268	YES
X	.037	+/- .003	698	YES
□	.041	+/- .003	17	YES
◇	.055	+/- .003	3	YES
⊗	.067	+/- .003	6	NO
⊠	.070	+/- .003	10	YES
A	.070	+/- .003	2	NO
B	.125	+/- .005	11	YES

UNLESS OTHERWISE SPECIFIED DIMENSIONS ARE IN INCHES TOLERANCES ARE : .XX +/- .010 .XXX +/- .005	CONTRACT NO.		 20 Cotton Road Nashua, New Hampshire 03063 (603) 883-2430 FAX (603) 882-2655	
	APPROVALS	DATE		
	DRAWN EASTERN CIRCUITS	04/26/06	FABRICATION DRAWING	
MATERIAL SEE NOTES	CHECKED		ADSP2189 EZ-KIT LITE	
FINISH SEE NOTES	ENGINEERING		SIZE B	REV. 2.0
DO NOT SCALE THIS DRAWING	MANUFACTURING		DWG. NO. A0153-99	
SCALE 1 : 1		SHEET 1 OF 1		



UNLESS OTHERWISE SPECIFIED DIMENSIONS ARE IN INCHES TOLERANCES ARE : .XX +/- .010 .XXX +/- .005	CONTRACT NO.		 ANALOG DEVICES	20 Cotton Road Nashua, New Hampshire 03063 (603) 883-2430 FAX (603) 882-2655	
	APPROVALS	DATE			
MATERIAL	DRAWN	EASTERN CIRCUITS	04/26/06	LAYER 1 TOP SIDE ADSP2189 EZ-KIT LITE	
	CHECKED				
FINISH	ENGINEERING			SIZE B	DWG. NO. A0153-99
	QUALITY				
DO NOT SCALE THIS DRAWING	MANUFACTURING			SCALE 1 : 1	SHEET 1 OF 10
				REV. 2.0	