



Release Notes for ADuCM302x EZ-KIT Board Support Pack 2.0.0

Contents

1	Introduction	3
2	Required Software	4
2.1	Keil uVision	4
2.2	CrossCore Embedded Studio	4
3	Release Testing	5
3.1	Keil uVision	5
3.2	CrossCore Embedded Studio	5
4	License Checking	6
5	Release Content	7
5.1	Source files for off-chip peripherals drivers	7
5.2	Location	7
6	Contacting Technical Support	9
7	Known Issues	10
7.1	SPI-Flash Example w25q32_example (CM3029BSP-35)	10
7.2	Building BSP Examples into CCES (MSKUV01-47)	10
7.3	Running Examples from ADuCM302x_EZ_KIT_BSP version 1.0.5. or previous	10

1 Introduction

This document describes the changes for the ADuCM302x EZ-KIT BSP 2.0.0. This BSP is supported in both Keil uVision and CrossCore Embedded Studio.

2 Required Software

2.1 Keil uVision

To use this BSP with Keil uVision, you must first obtain and install:

- Keil uVision MDK v5.23 or later with ARM Compiler version 1.1.0 or later.
- Segger J-Link LITE v5.10p or later.

Install the Keil software first, then install the Segger J-Link LITE software.

- ADuCM302x 2.0.0 Device Family Pack.

2.2 CrossCore Embedded Studio

To use this BSP with CrossCore Embedded Studio (CCES), you must first obtain and install:

- CrossCore Embedded Studio 2.6.0 or later.
- Install ADuCM302x 2.0.0 Device Family Pack.

3 Release Testing

3.1 Keil uVision

The BSP has been tested with

EZ-KIT	Emulator
ADuCM3029 EZ-KIT version 1.0 BOM Rev 1.2	J-Link Lite

3.2 CrossCore Embedded Studio

The BSP has been tested with

EZ-KIT	Emulator
ADuCM3029 EZ-KIT version 1.0 BOM Rev 1.2	ICE-1000
	ICE-2000

4 License Checking

Use of the BSP software is subject to the Software License Agreement presented during installation.

5 Release Content

This release contains the following sets of components:

- Source files for the drivers for off-chip peripherals which are on the ADuCM302x EZ-Kit. These components are authored by Analog Devices, for use on the ADuCM302x processor.
- Examples for all the drivers, device family and off-chip. These components are authored by Analog Devices, and demonstrate the use of the device drivers. Some of the examples make use of the FreeRTOS products, so have a dependency on FreeRTOS, which must be obtained separately.
- Documentation.

5.1 Source files for off-chip peripherals drivers

adi_adxl363*.*	Accelerometer ADXL363 driver
adi_w25q32*.*	W25Q32 SPI-flash driver

Various off-chip peripheral device driver sources and include files in “Source” and “Include” directories.

5.2 Location

The BSP will be installed into the CMSIS pack directory for the targeted development environment:

Keil	<keil_root>\ARM\PACK\AnalogDevices\ADuCM302x_EZ_KIT_BSP\2.0.0
CCES	<cces_root>\ARM\PACK\AnalogDevices\ADuCM302x_EZ_KIT_BSP\2.0.0

with

Symbol	Meaning	Example Value
<keil_root>	Keil installation path	C:\Keil_v5

Symbol	Meaning	Example Value
<cces_root>	CCES installation path	C:\Analog Devices\CrossCore Embedded Studio 2.6.0

6 Contacting Technical Support

You can reach Analog Devices software and tools technical support in the following ways:

- Post your questions in the [software and development tools support community](#) at [EngineerZone[®]](#).
- E-mail your questions about processors and processor applications to processor.support@analog.com.
- For Greater China, Processors and DSP applications and processor questions can be sent to: processor.china@analog.com.
- Submit your questions to technical support directly via <http://www.analog.com/support>.
- Contact your [Analog Devices sales office](#) or authorized distributor.

7 Known Issues

For the latest anomalies please consult our [Software and Tools Anomalies Search](#) page.

7.1 SPI-Flash Example w25q32_example (CM3029BSP-35)

The SPI-Flash example fails when executing the *Release* built version with Keil uVision. This example works fine with CCES, using *Release* or *Debug* build, and with Keil, using *Debug* build.

7.2 Building BSP Examples into CCES (MSKUV01-47)

Examples supplied with the Board Support Pack (BSP) import properly if you use the File | Import and the copy projects to workspace option in CrossCore Embedded Studio. However It failed while building the imported BSP Examples.

7.3 Running Examples from ADuCM302x_EZ_KIT_BSP version 1.0.5. or previous

Examples from old BSP Version 1.0.5 or previous can be run by selecting software pack for Target shown in figure below for keil and cces respectively.

Follow the below steps to run old BSP examples from keil :

- Click on software pack marked in red square
- Uncheck the box to select the BSP Version "Use latest versions of installed Software Packs"
- Select required DFP version to run the examples.

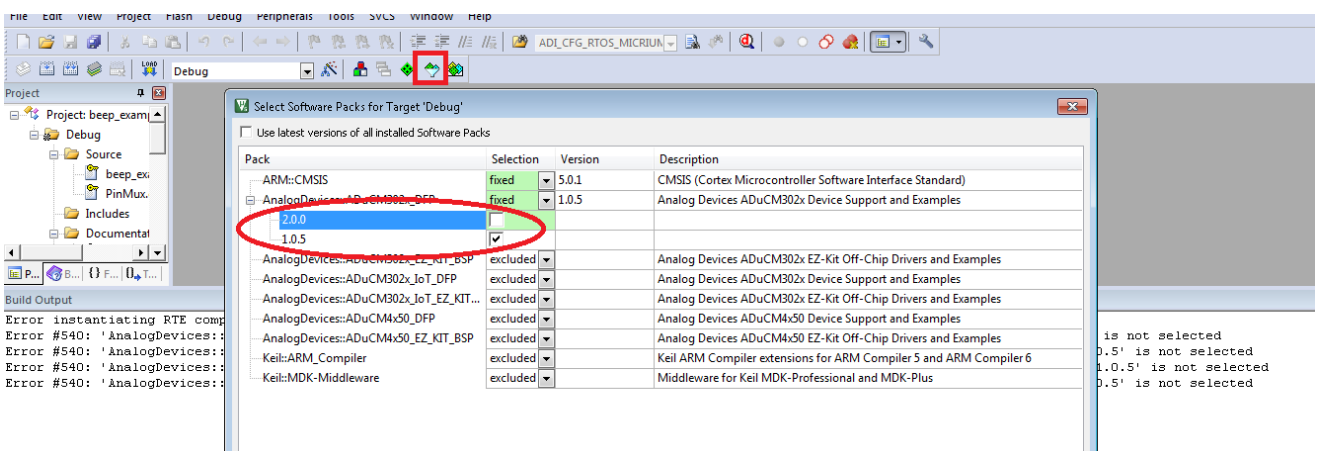


Figure 1: Selecting software pack in Keil

Follow the below steps to run old BSP examples from CCES:

- Click on "system.rteconfig" marked in red square and choose "Packs".
- Uncheck the box to "Use all latest Packs"
- Select the required DFP version to run the examples

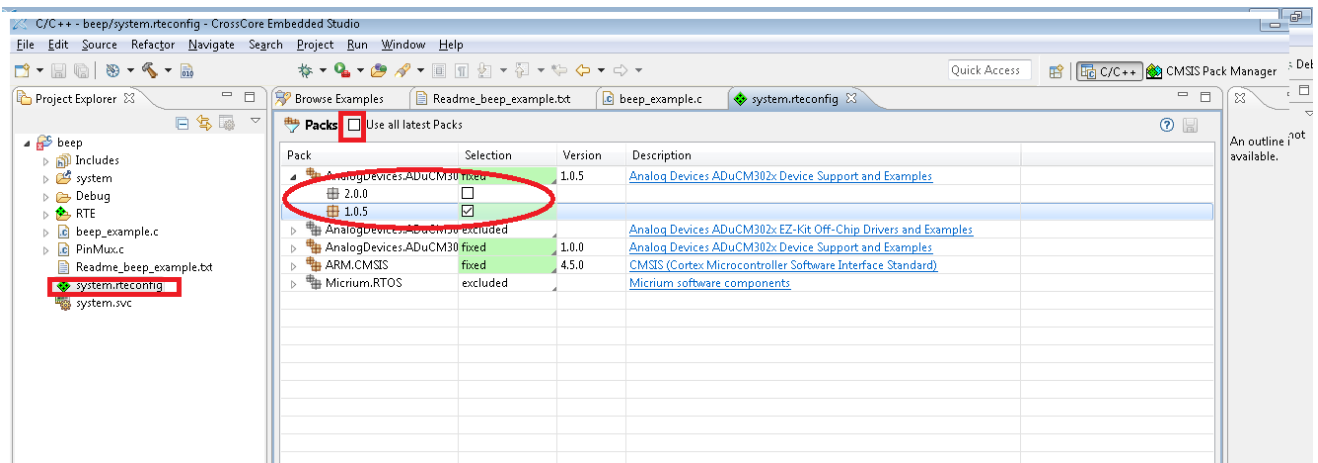


Figure 2: Selecting software pack in CCES